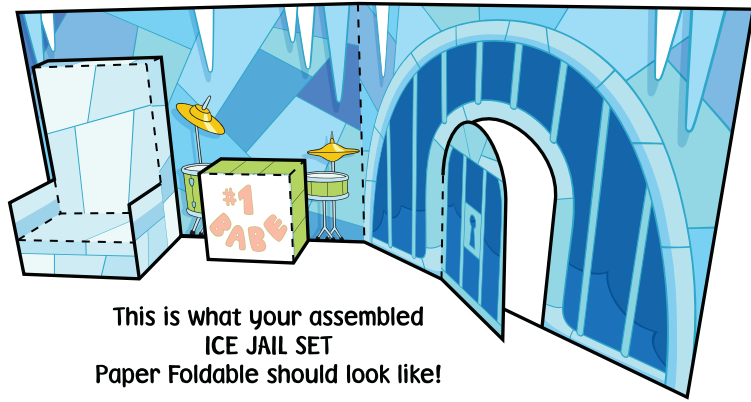
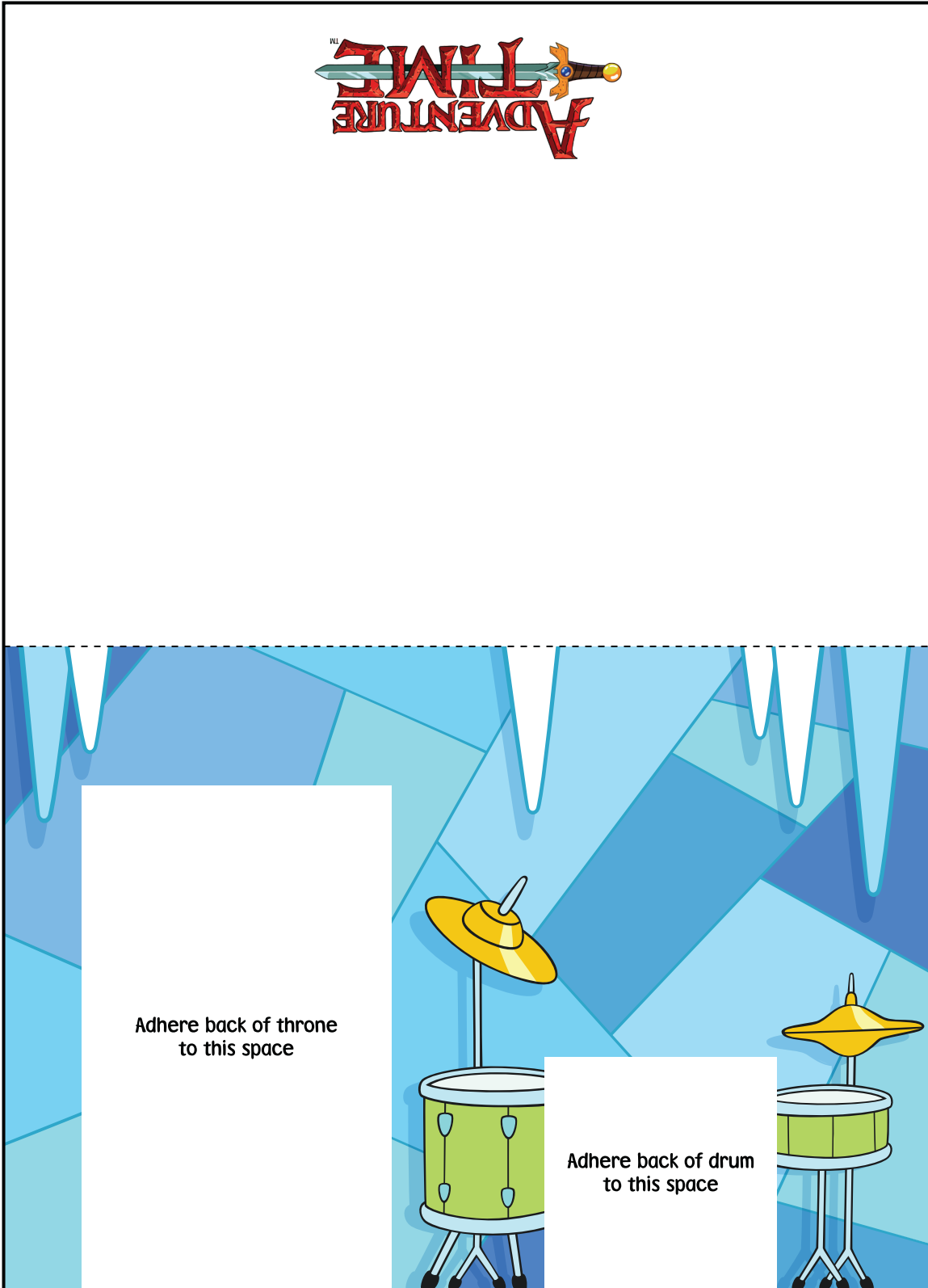




Print template on sturdy paper.
 Cut carefully along solid black outline.
 Score and fold on dotted lines.
 Tape or glue folded tabs to the insides.

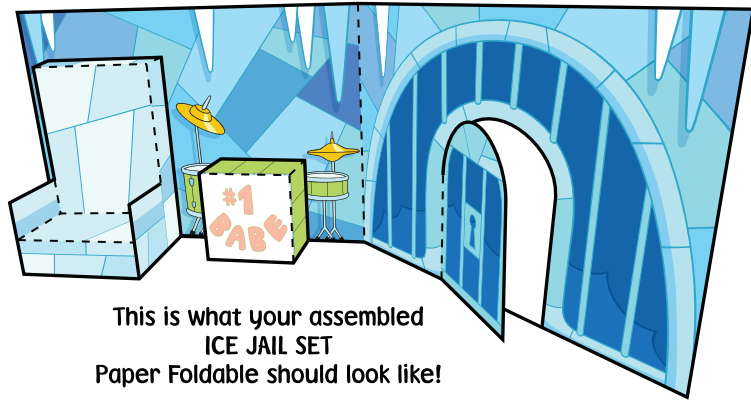


This is what your assembled
 ICE JAIL SET
 Paper Foldable should look like!

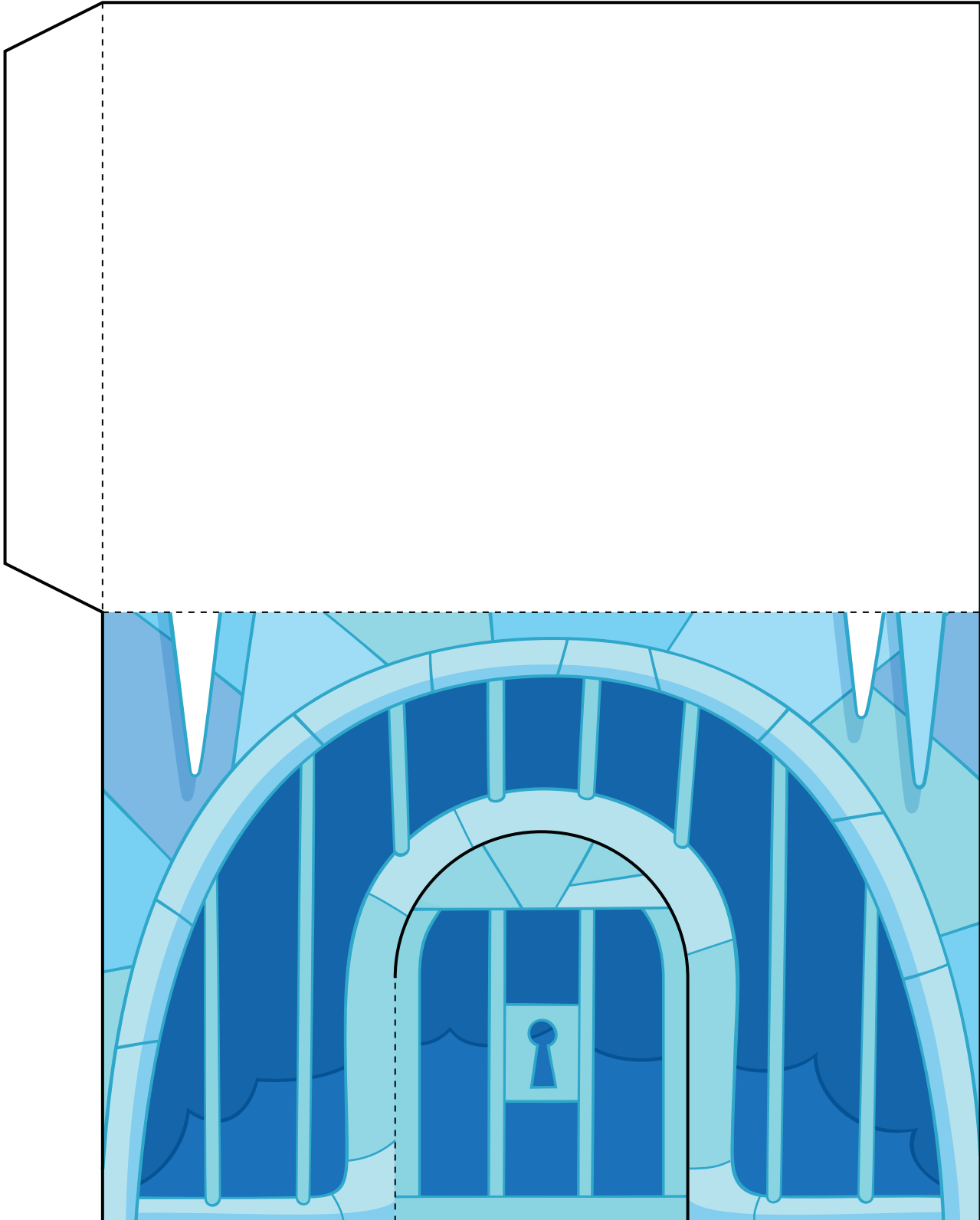




Print template on sturdy paper.
Cut carefully along solid black outline.
Score and fold on dotted lines.
Tape or glue folded tabs to the insides.

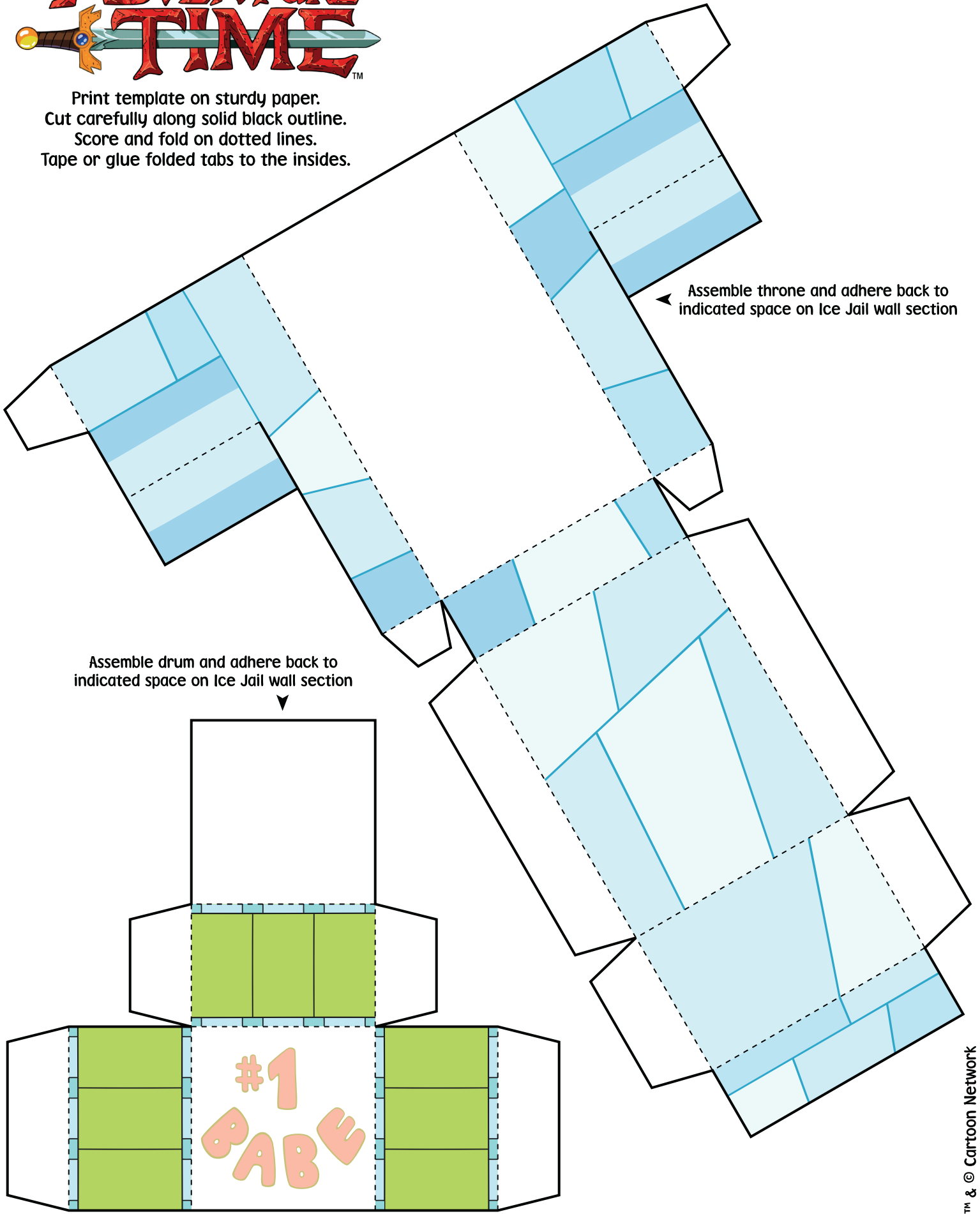


This is what your assembled
ICE JAIL SET
Paper Foldable should look like!





Print template on sturdy paper.
Cut carefully along solid black outline.
Score and fold on dotted lines.
Tape or glue folded tabs to the insides.



Assemble throne and adhere back to indicated space on Ice Jail wall section

Assemble drum and adhere back to indicated space on Ice Jail wall section