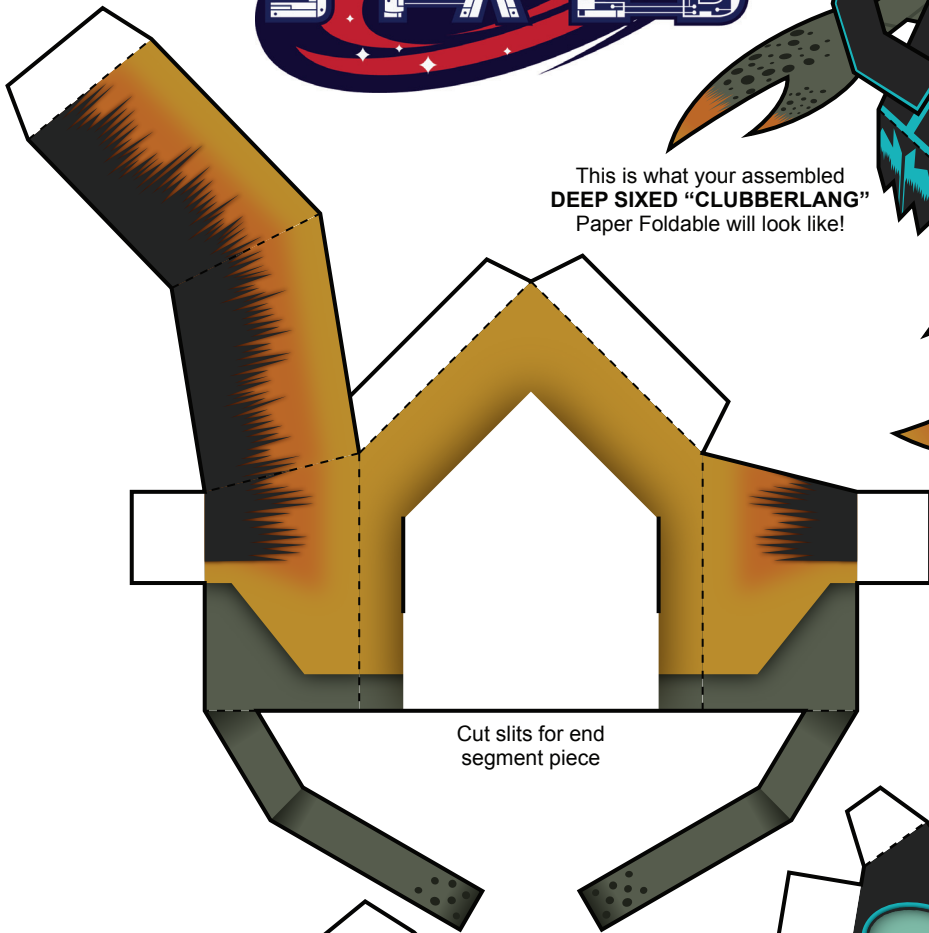
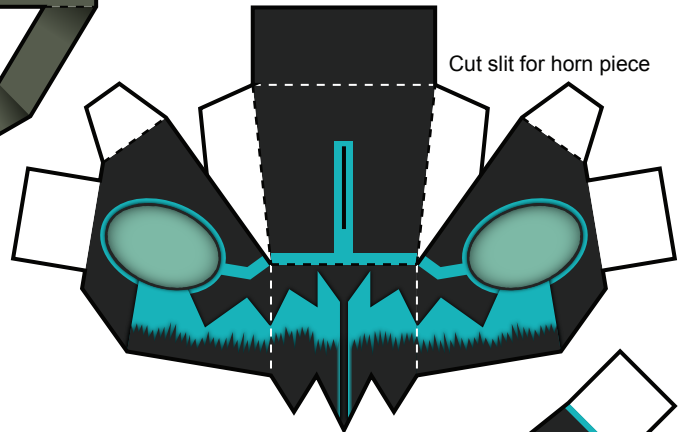


This is what your assembled
DEEP SIXED "CLUBBERLANG"
Paper Foldable will look like!



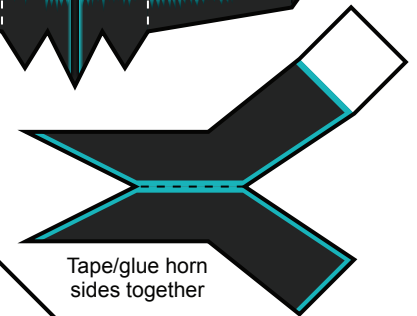
Cut slits for end
segment piece

INSTRUCTIONS
Print template on cardstock paper.
Cut-out pieces along black outlines.
Fold on dashed lines. Tape or glue folded tabs
to corresponding insides (double-sided tape or
glue stick recommended). Cut indicated slits
and connect square white tabs to assemble.

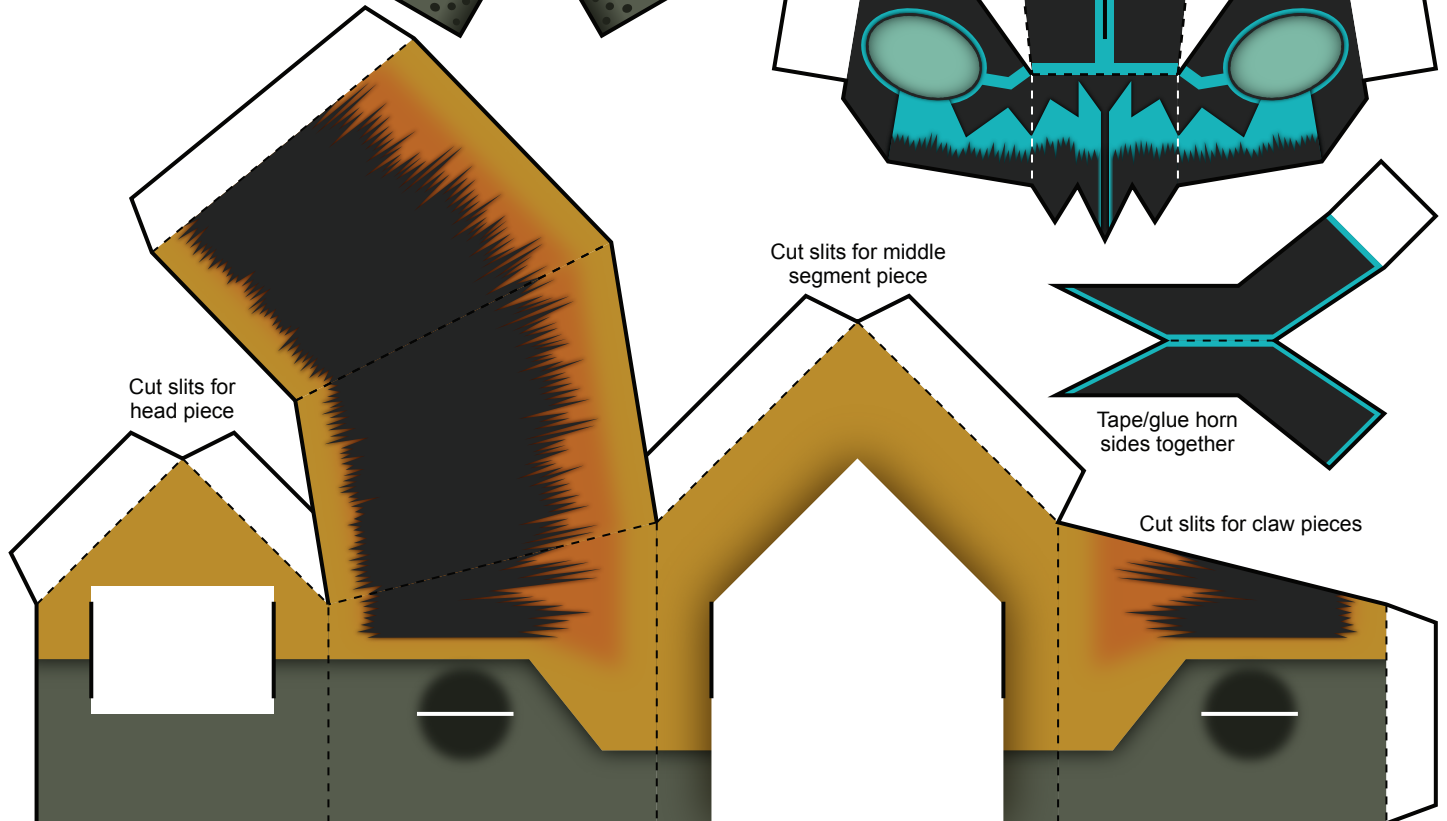


Cut slit for horn piece

Cut slits for middle
segment piece



Tape/glue horn
sides together



Cut slits for
head piece

Cut slits for claw pieces

