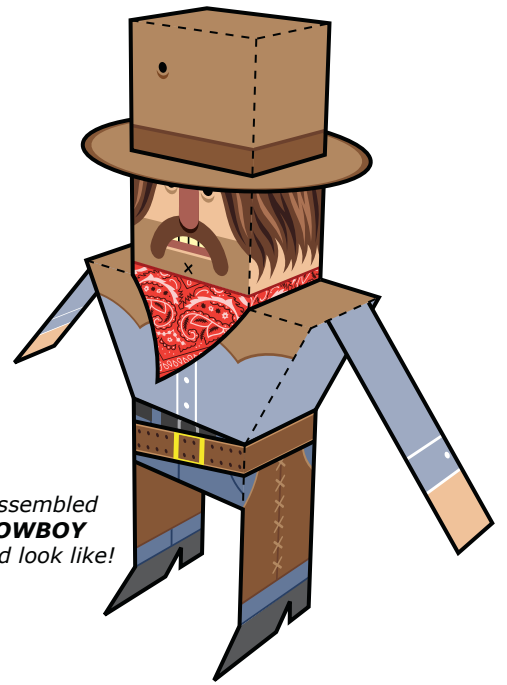
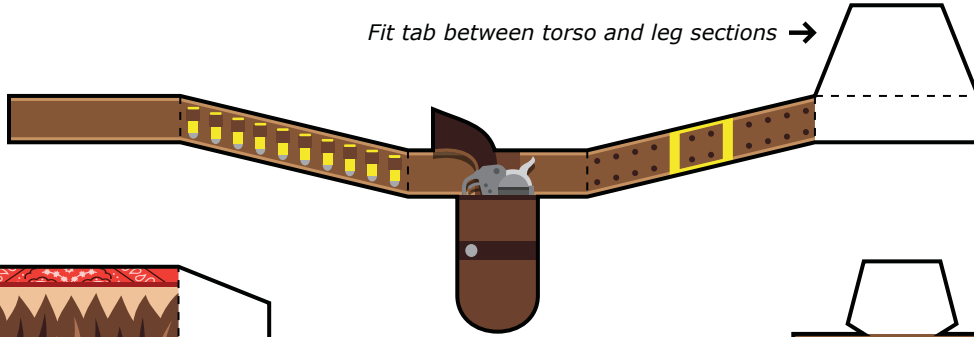


- Print template on sturdy paper
- Cut along solid black lines
- Fold along dotted lines
- Tape or glue tabs and sides to assemble

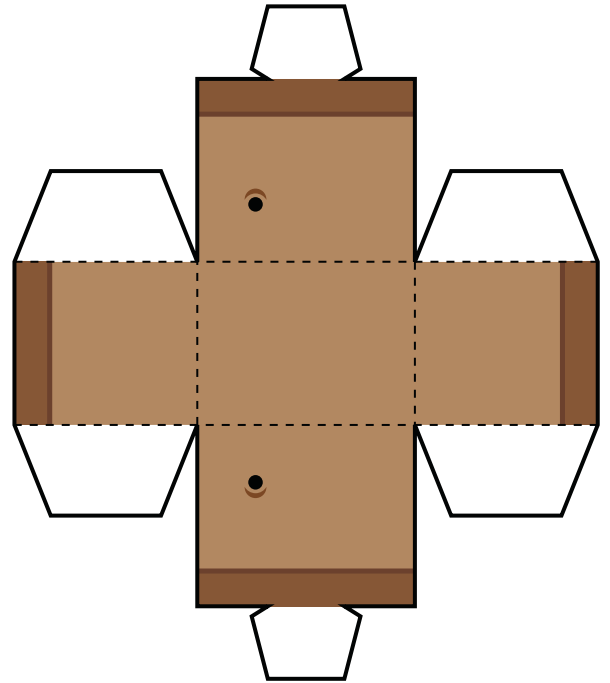
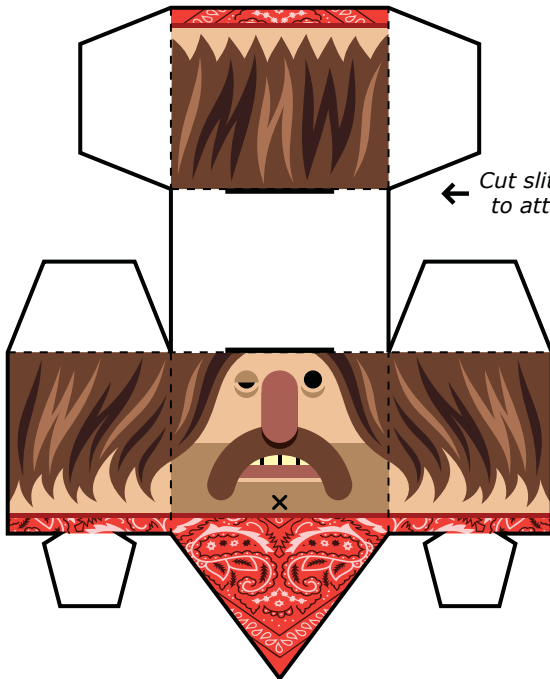


This is what your assembled **QUICK-DRAW COWBOY** Paper Foldable should look like!

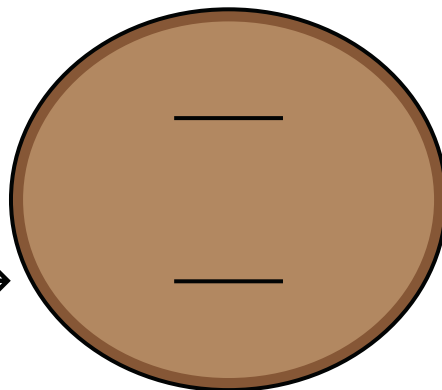
Fit tab between torso and leg sections →

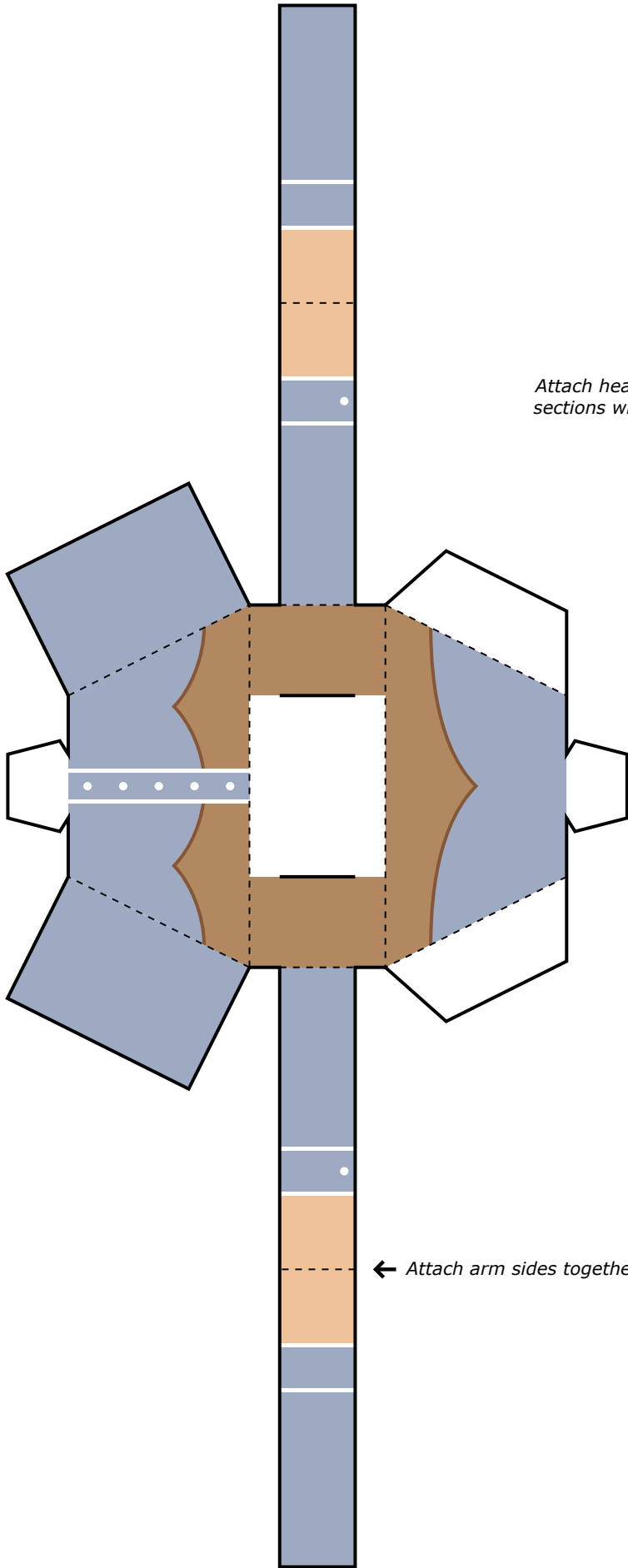


← Cut slits at top of head to attach hat section



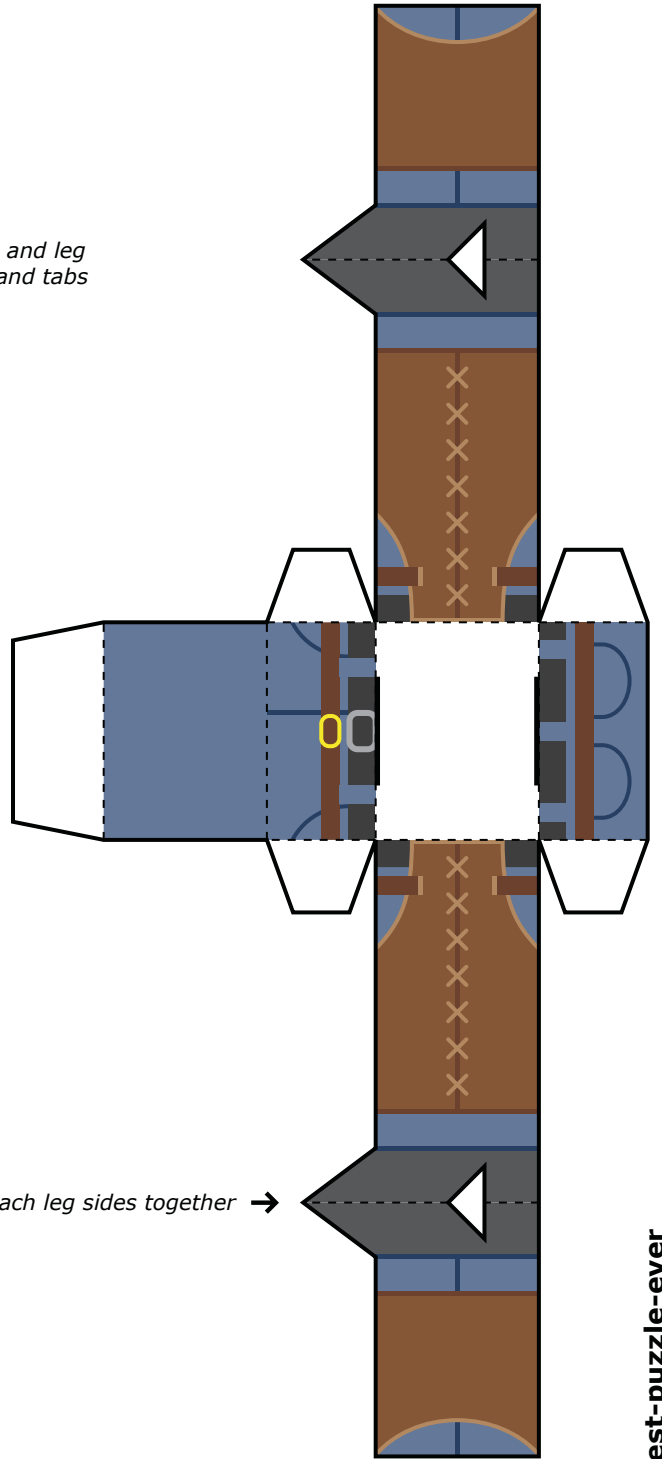
Cut slits in brim to attach top of hat section →





Attach head, torso and leg sections with slits and tabs

← Attach arm sides together



Attach leg sides together →