

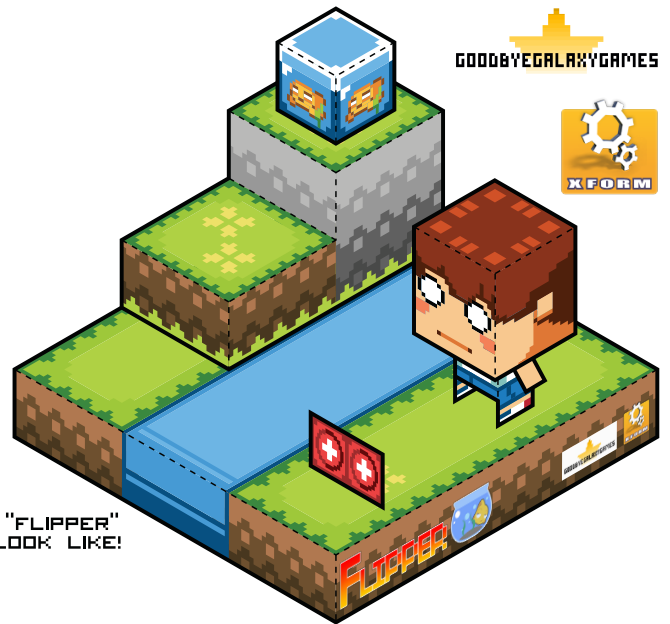
FLIPPER



WWW.FLIPPERGAME.COM

PRINT. CUT. FOLD. TAPE.

PRINT TEMPLATE ON STURDY PAPER AND CUT ALONG SOLID BLACK OUTLINE WITH A HOBBY KNIFE OR SCISSORS. BE SURE TO CUT INDICATED SLITS ON THE BASE SECTION TO CONNECT SEPARATE PIECES! FOLD ON THE DOTTED LINES AND USE DOUBLE-SIDED TAPE OR GLUE TO CONNECT TABS TO THE INSIDES.



THIS IS WHAT YOUR ASSEMBLED "FLIPPER" PAPER FOLDABLE SET SHOULD LOOK LIKE!

