



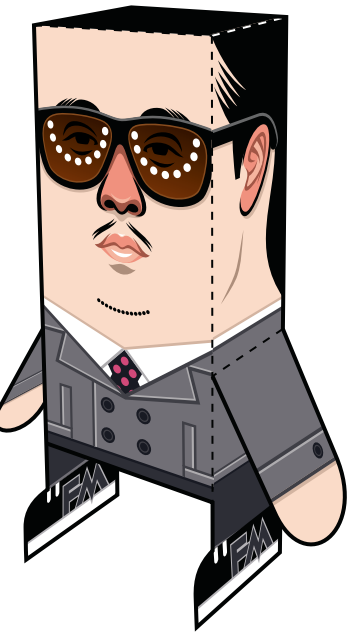
Print. Cut. Fold. Tape.

Tape leg sides together

Cut slit for ponytail

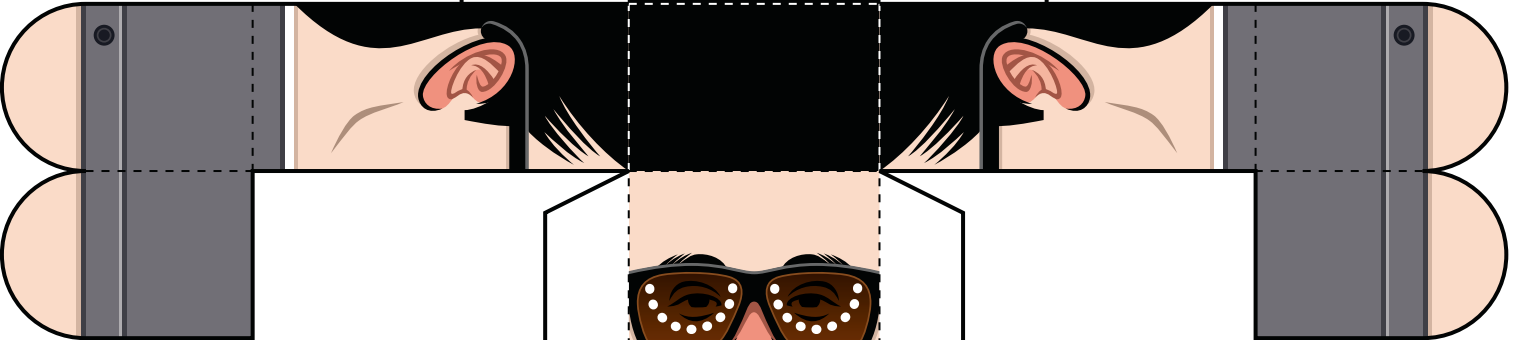
Cut along solid black outline

Tape head side to white area



*This is what your assembled J-SPLIF Paper Foldable should look like!*

Fold on dotted lines



Tape arm sides together

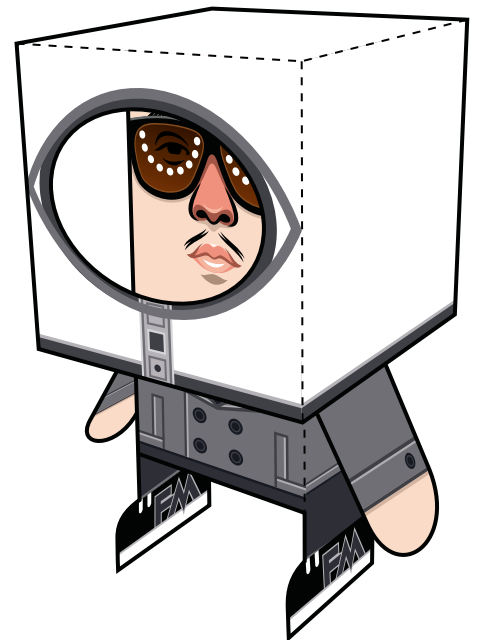
Tape tabs to the insides

Tape ponytail sides together

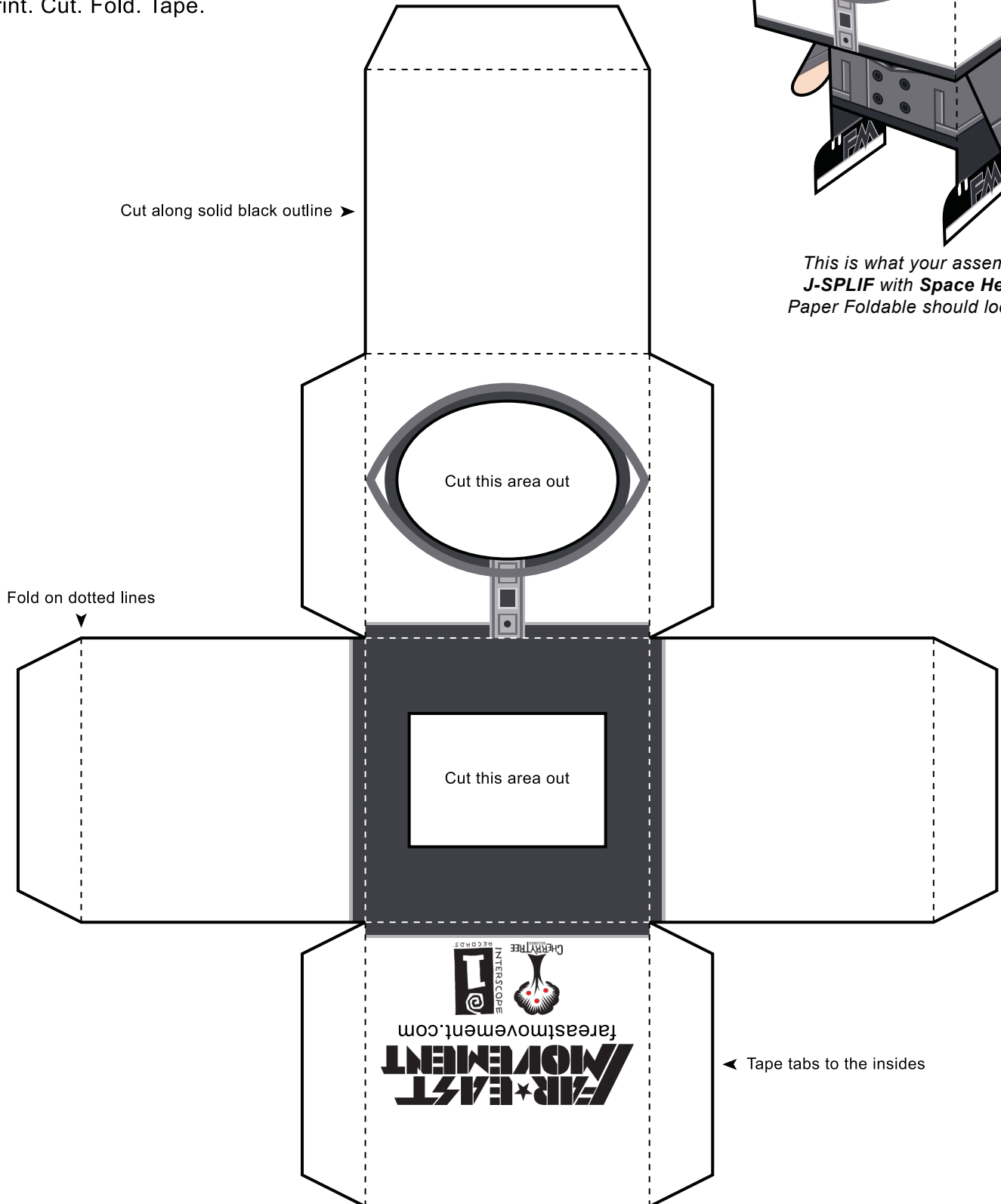




Print. Cut. Fold. Tape.



*This is what your assembled  
J-SPLIF with Space Helmet  
Paper Foldable should look like!*



Cut along solid black outline ➤

Cut this area out

Fold on dotted lines

Cut this area out

← Tape tabs to the insides