

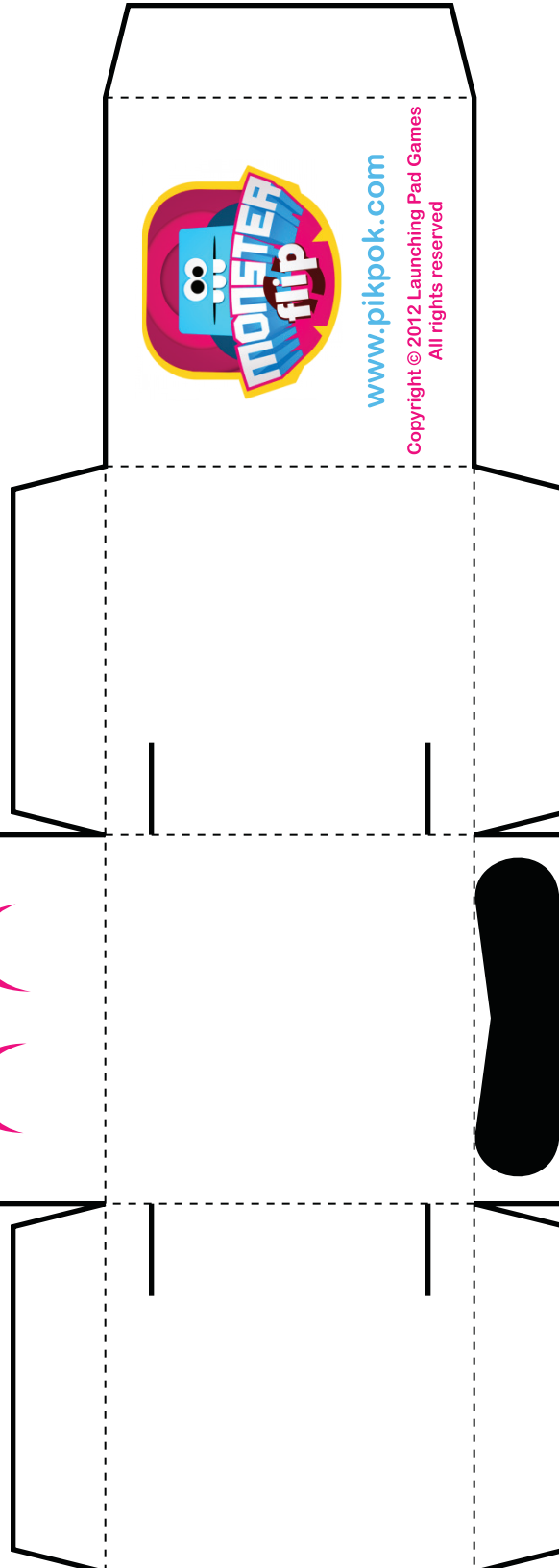
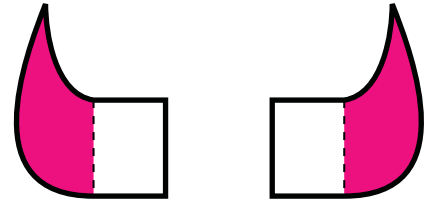
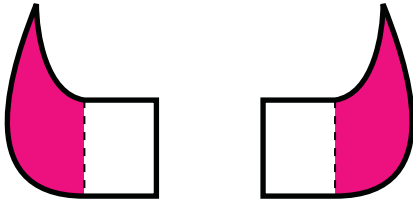
This is what your assembled
SNUZZLE Paper Foldable
should look like!



www.pikpok.com/monsterflip

Copyright © 2012 Launching Pad Games.
Published under license by Prodigy Design Limited.
All rights reserved

Print template on sturdy paper.
Cut-out along solid black outlines.
Fold on dotted lines.
Tape or glue folded tabs to insides.
FLIP!



Cut slits on sides
for horn pieces to fit.

Tape/glue leg
sides together.