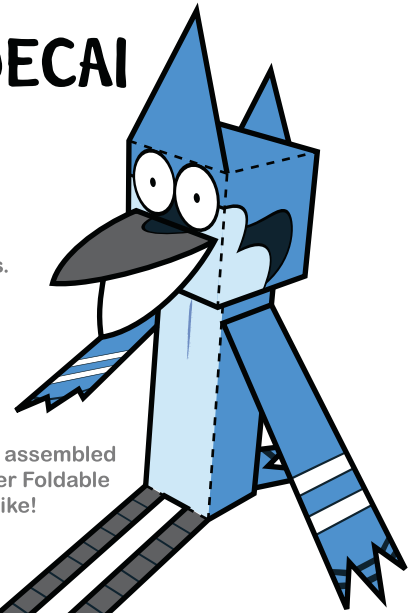


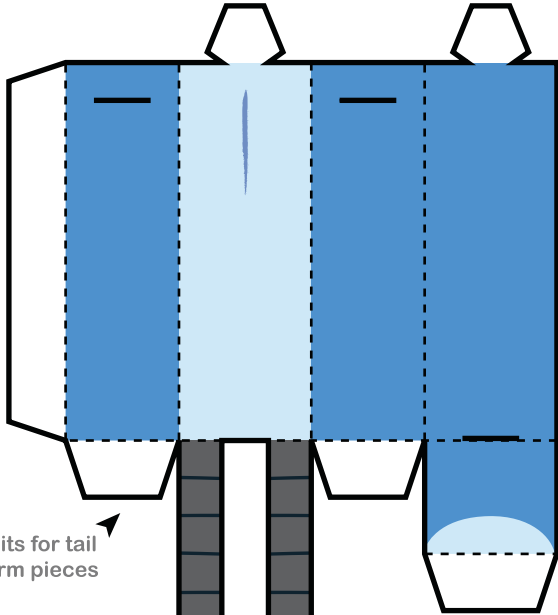
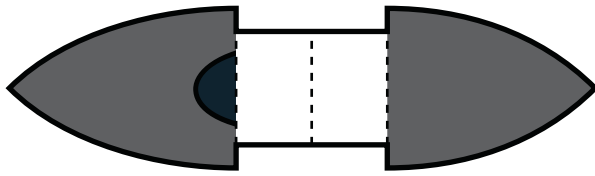
REGULAR SHOW

MORDECAI

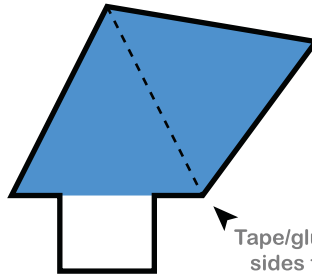
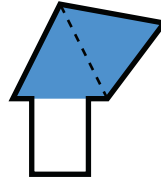
Instructions:
Print template on sturdy paper.
Cut-out along solid black outlines.
Fold along dotted lines.
Tape or glue folded tabs to insides.
(Double-sided tape or glue stick recommended)



This is what your assembled MORDECAI Paper Foldable will look like!

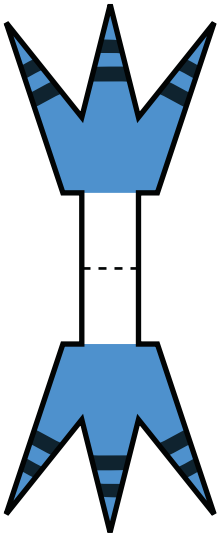
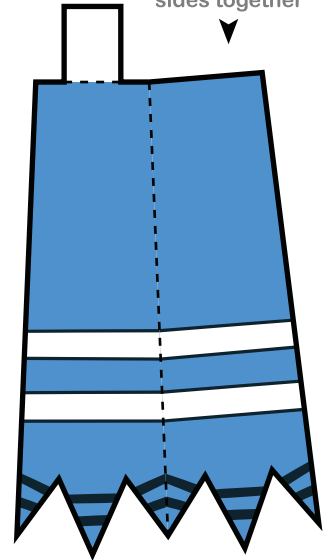


Cut slits for tail and arm pieces

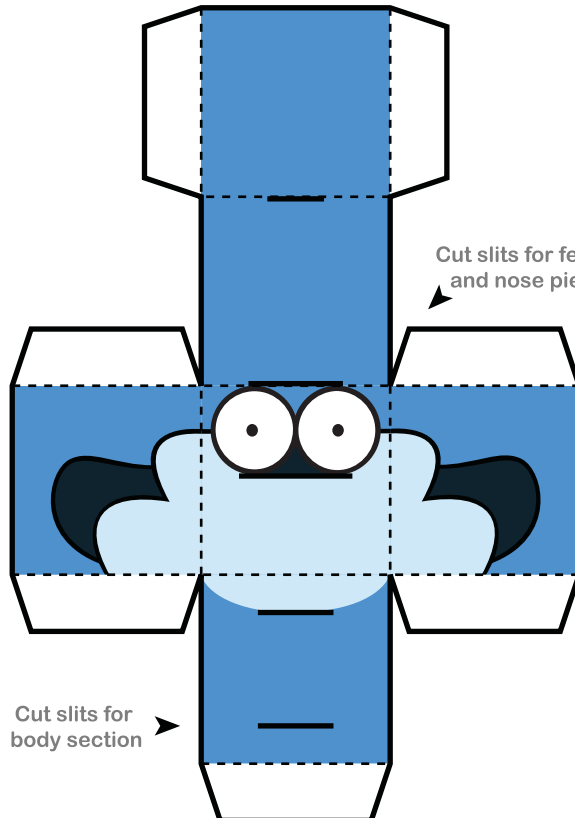


Tape/glue feather sides together

Tape/glue arm sides together



Tape/glue tail sides together



Cut slits for feather and nose pieces

Cut slits for body section

