

# REGULAR SHOW™

## Instructions:

Print template on sturdy paper.

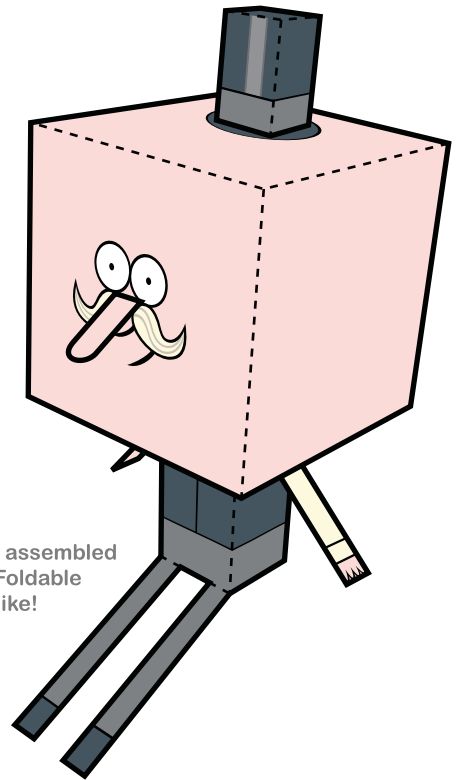
Cut-out along solid black outlines.

Fold along dotted lines.

Tape or glue folded tabs to insides.

(Double-sided tape or glue stick recommended)

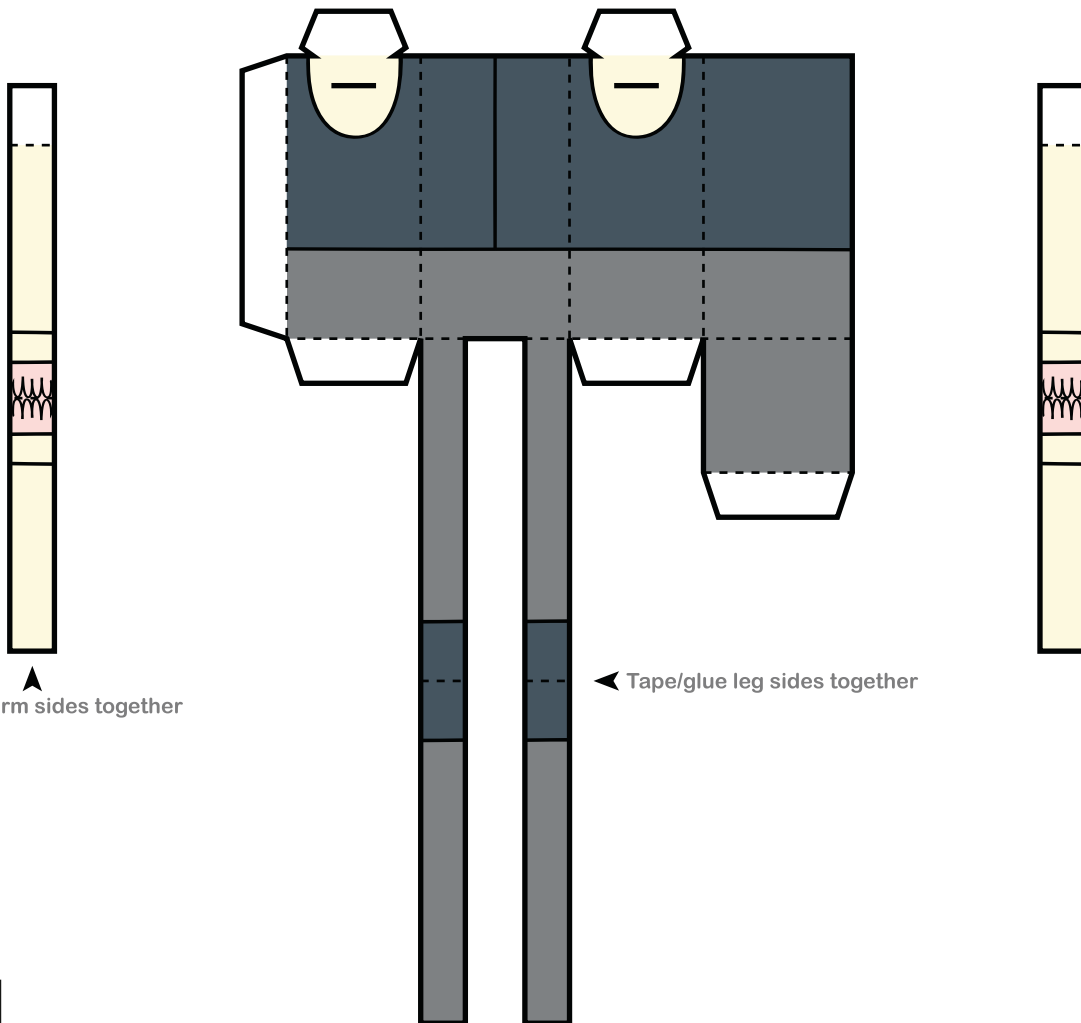
## POPS



Assemble body section from this page and connect to head section

This is what your assembled POPS Paper Foldable will look like!

Cut slits for arm pieces



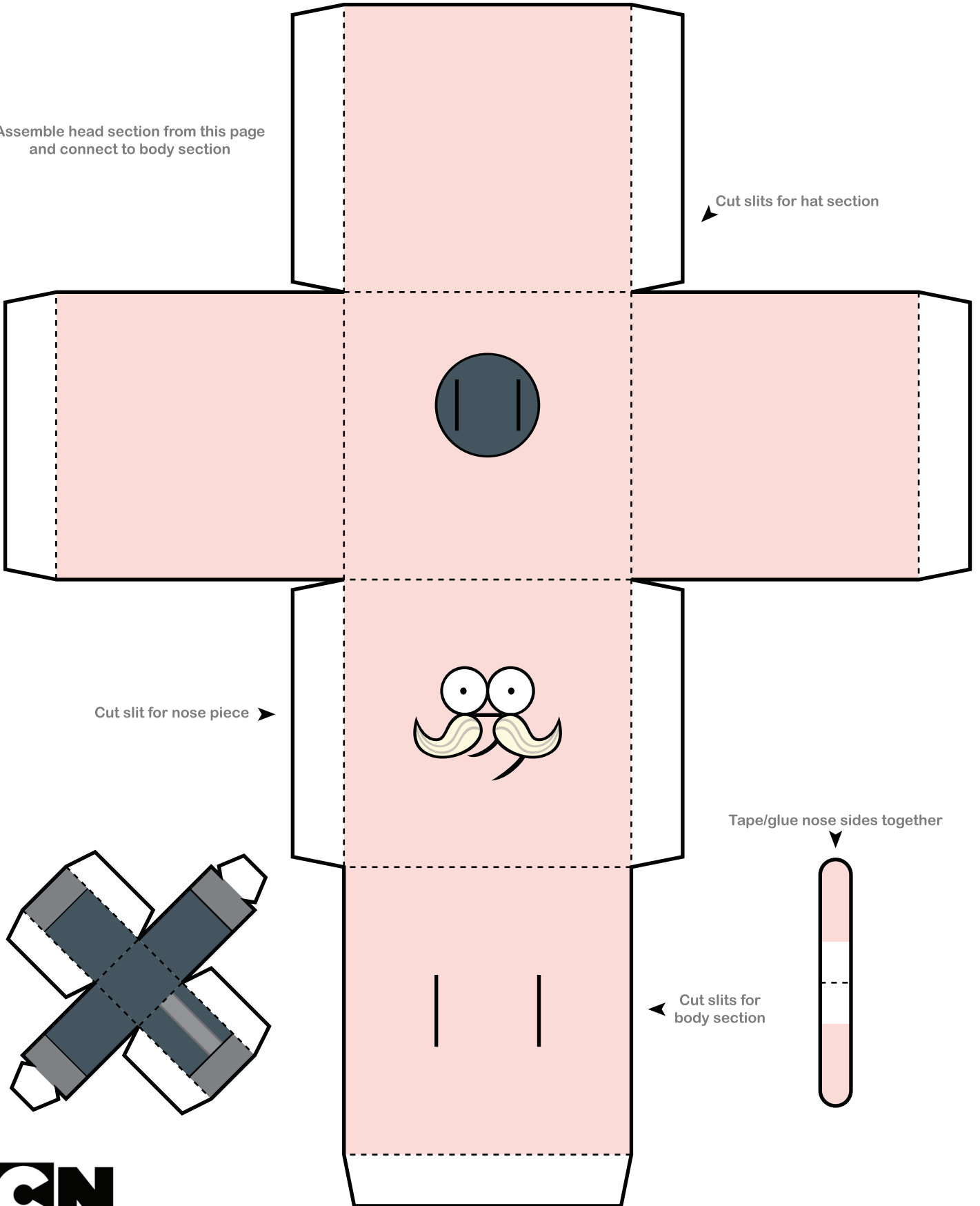
Tape/glue arm sides together

Tape/glue leg sides together

# REGULAR SHOW™

Assemble head section from this page  
and connect to body section

Cut slits for hat section



Cut slit for nose piece

Tape/glue nose sides together

Cut slits for  
body section