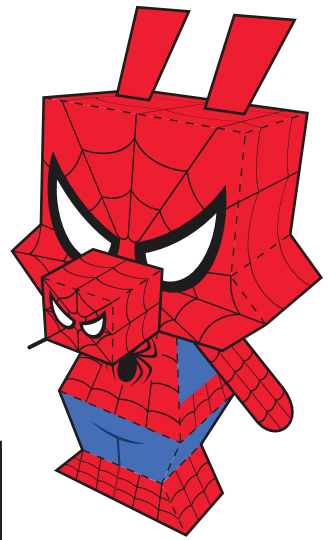


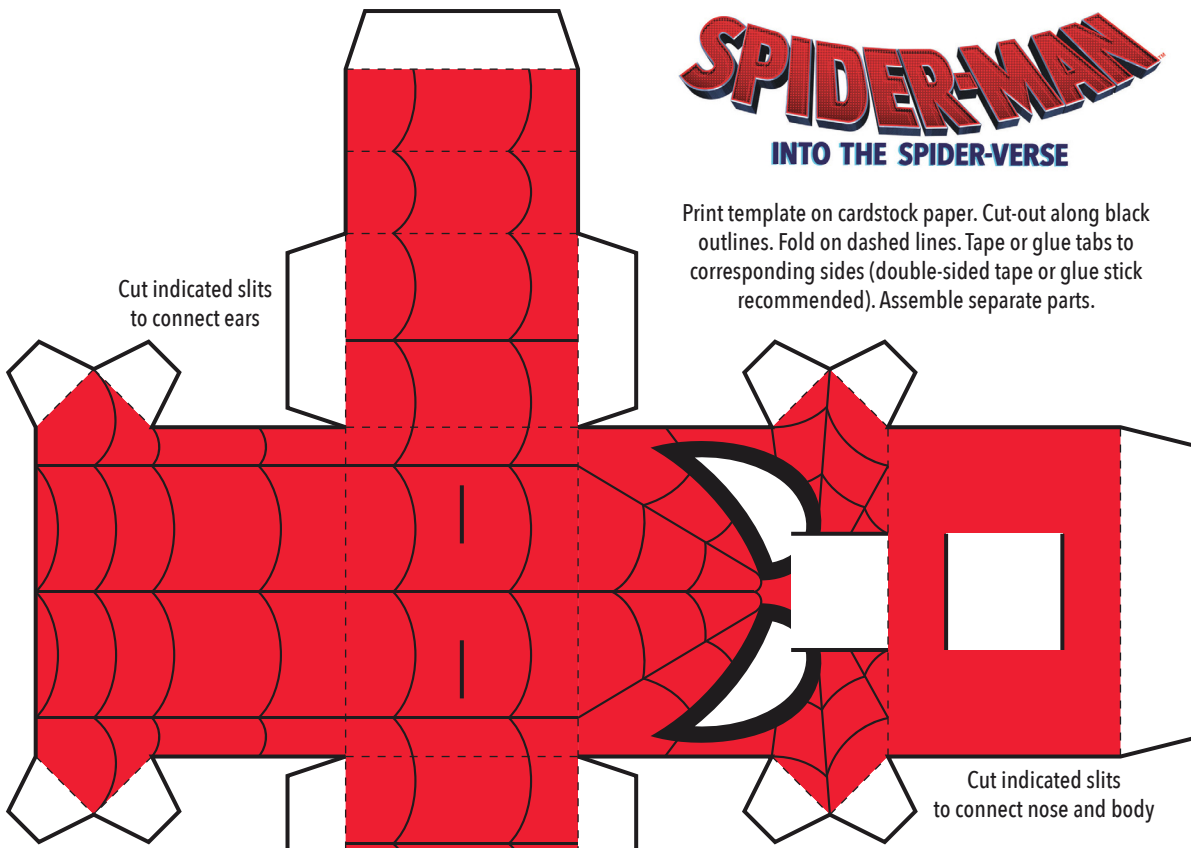
SPIDER-MAN

INTO THE SPIDER-VERSE

Print template on cardstock paper. Cut-out along black outlines. Fold on dashed lines. Tape or glue tabs to corresponding sides (double-sided tape or glue stick recommended). Assemble separate parts.



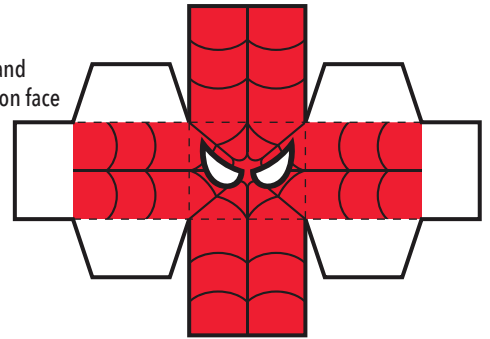
This is what your assembled **Spider-Ham** Paper Foldable will look like!



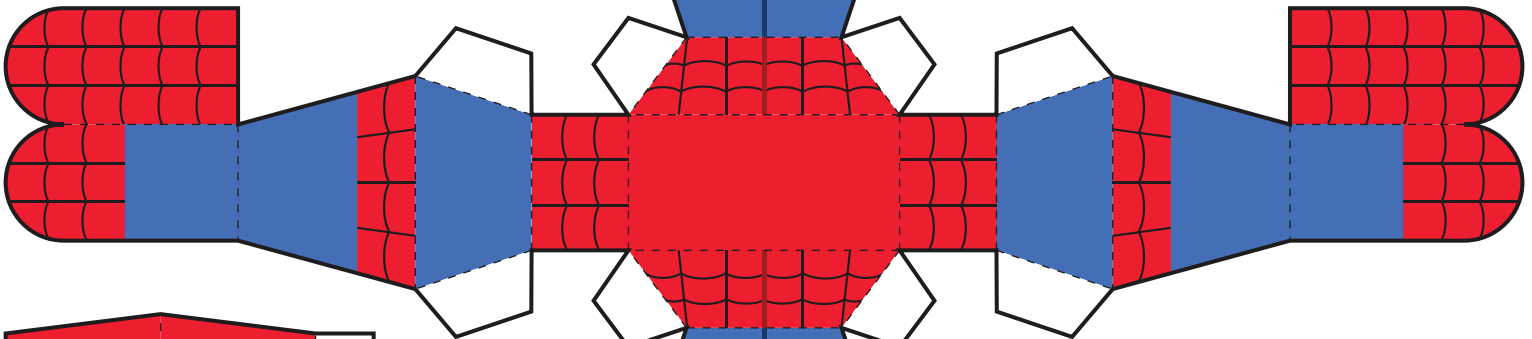
Tape/glue tail sides together



Assemble nose and connect tabs to slits on face



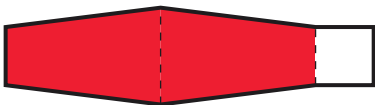
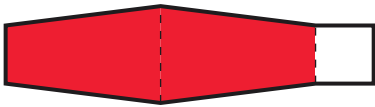
Tape/glue arm sides together



Assemble body and connect tabs to slits on bottom of head

Tape/glue arm sides together

Tape/glue ear sides together



Cut indicated slit to connect tail

