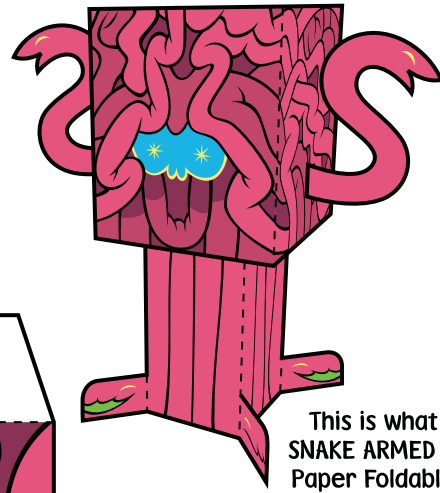


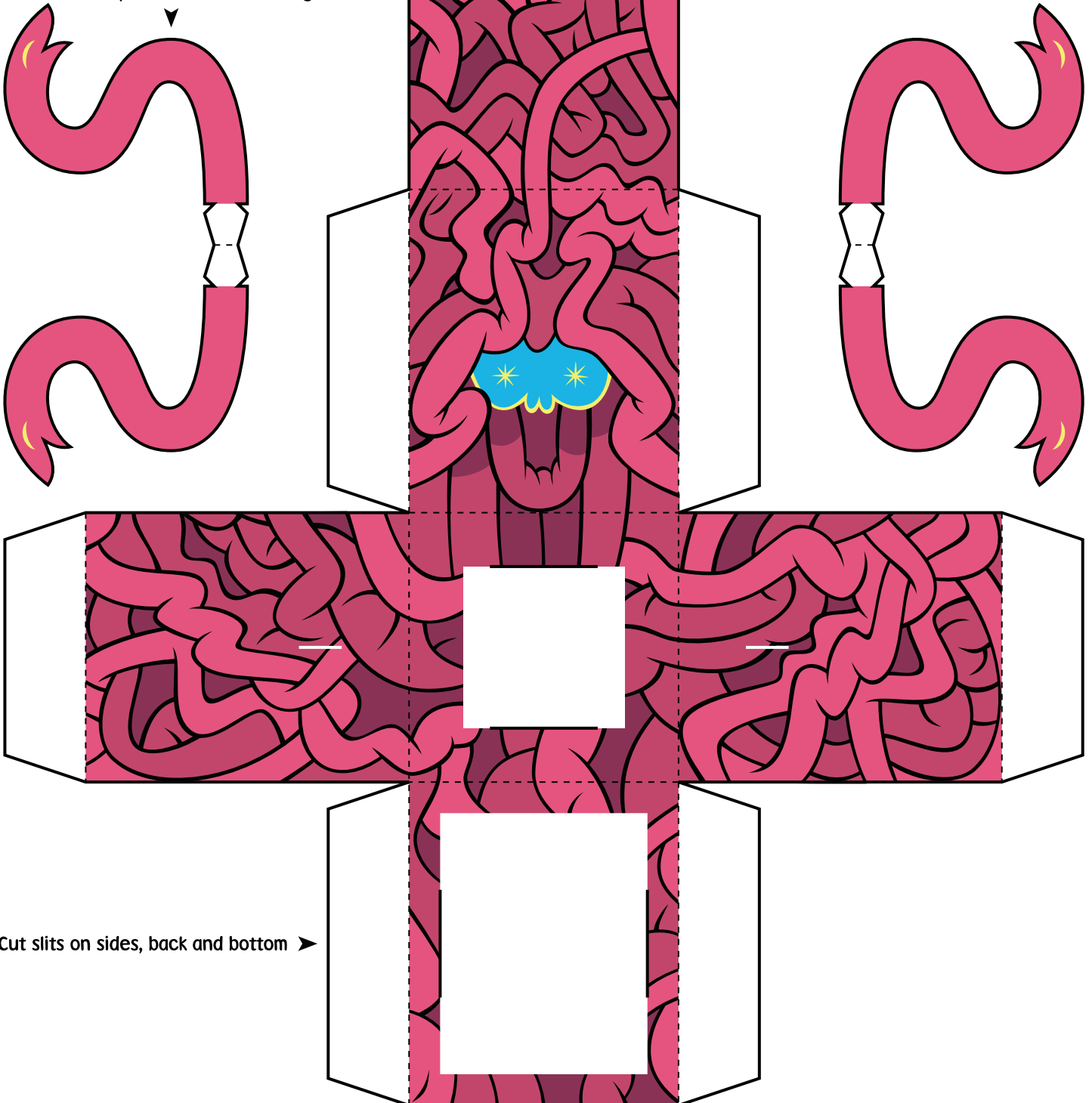


Print template on sturdy paper.
Cut carefully along solid black outline.
Score and fold on dotted lines.
Tape or glue folded tabs to the insides.

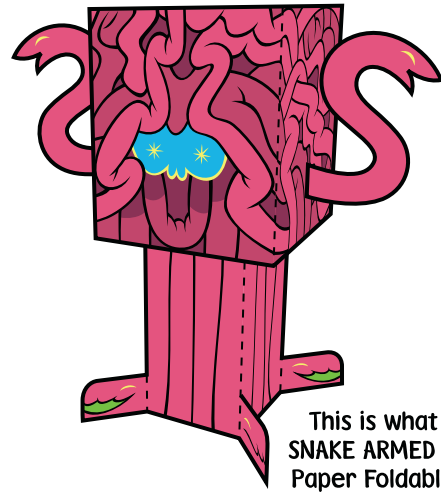


This is what your assembled
SNAKE ARMED RUBY BRAIN BEAST
Paper Foldable should look like!

Tape snake arm sides together

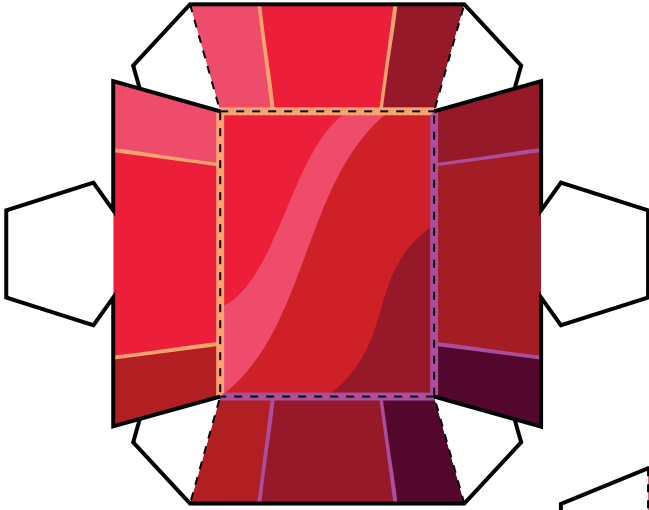


Cut slits on sides, back and bottom

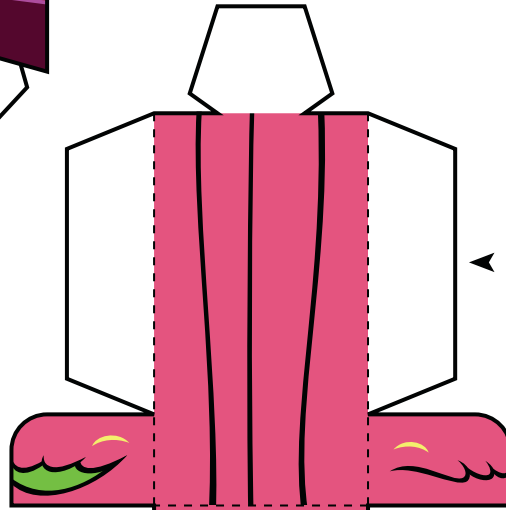


Print template on sturdy paper.
Cut carefully along solid black outline.
Score and fold on dotted lines.
Tape or glue folded tabs to the insides.

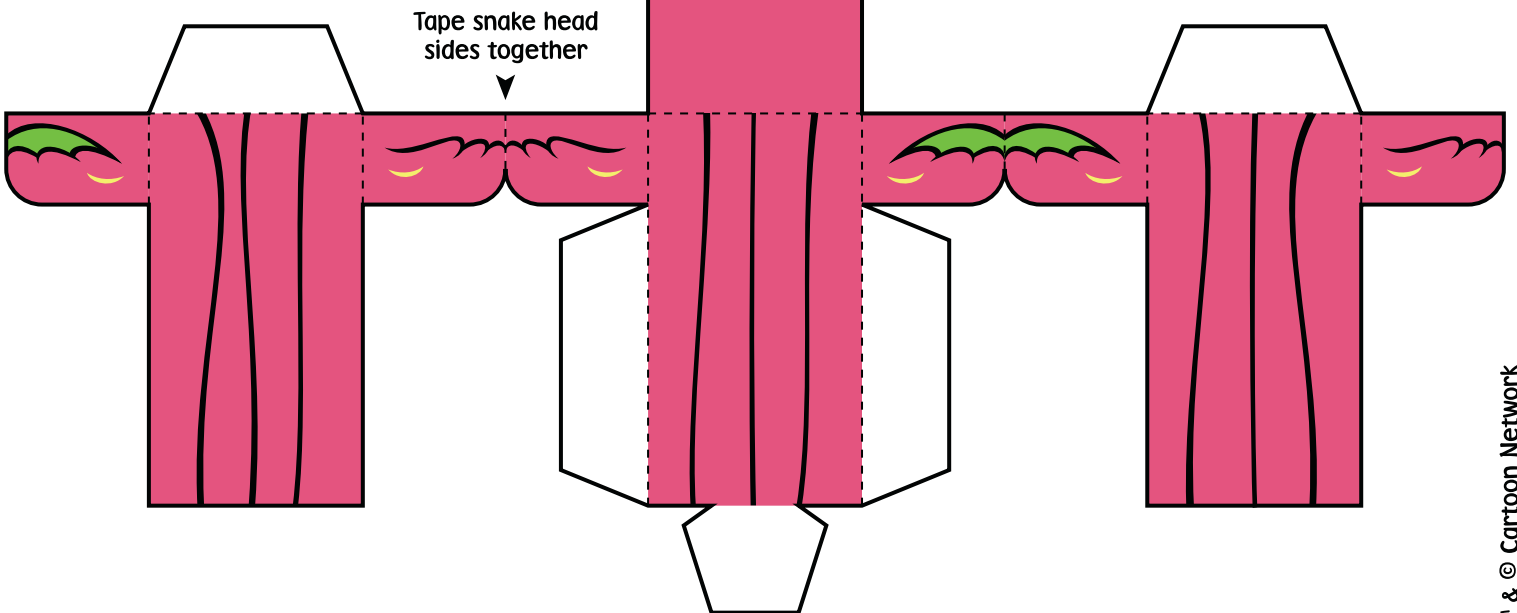
This is what your assembled
SNAKE ARMED RUBY BRAIN BEAST
Paper Foldable should look like!



Assemble ruby and insert
tabs into slits on back



Assemble snake legs and insert
tabs into slits on bottom



Tape snake head
sides together