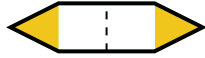
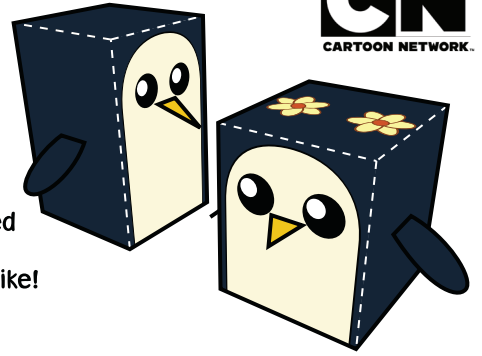


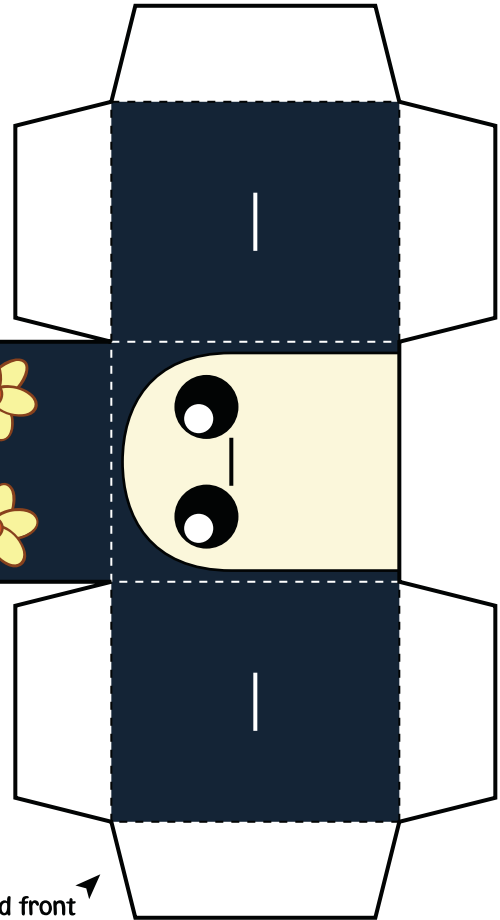
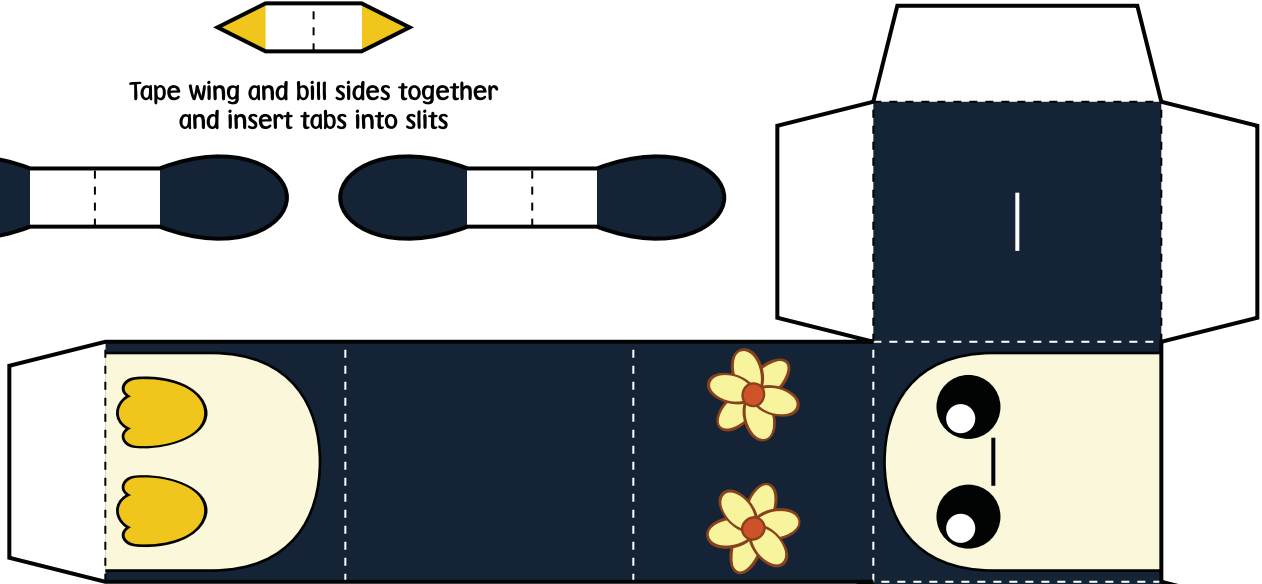


Print template on sturdy paper.  
 Cut carefully along solid black outline.  
 Score and fold on dotted lines.  
 Tape or glue folded tabs to the insides.

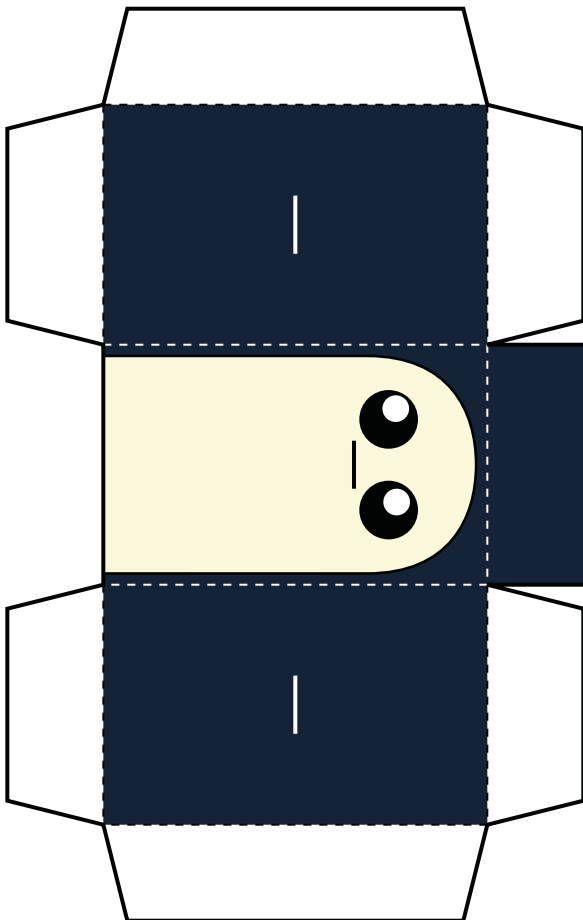
This is what your assembled  
 ICE PENGUIN  
 Paper Foldables should look like!



Tape wing and bill sides together  
 and insert tabs into slits



Cut slits on sides and front



Tape wing and bill sides together  
 and insert tabs into slits

