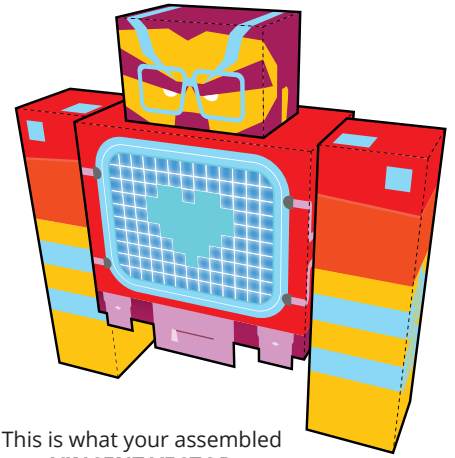
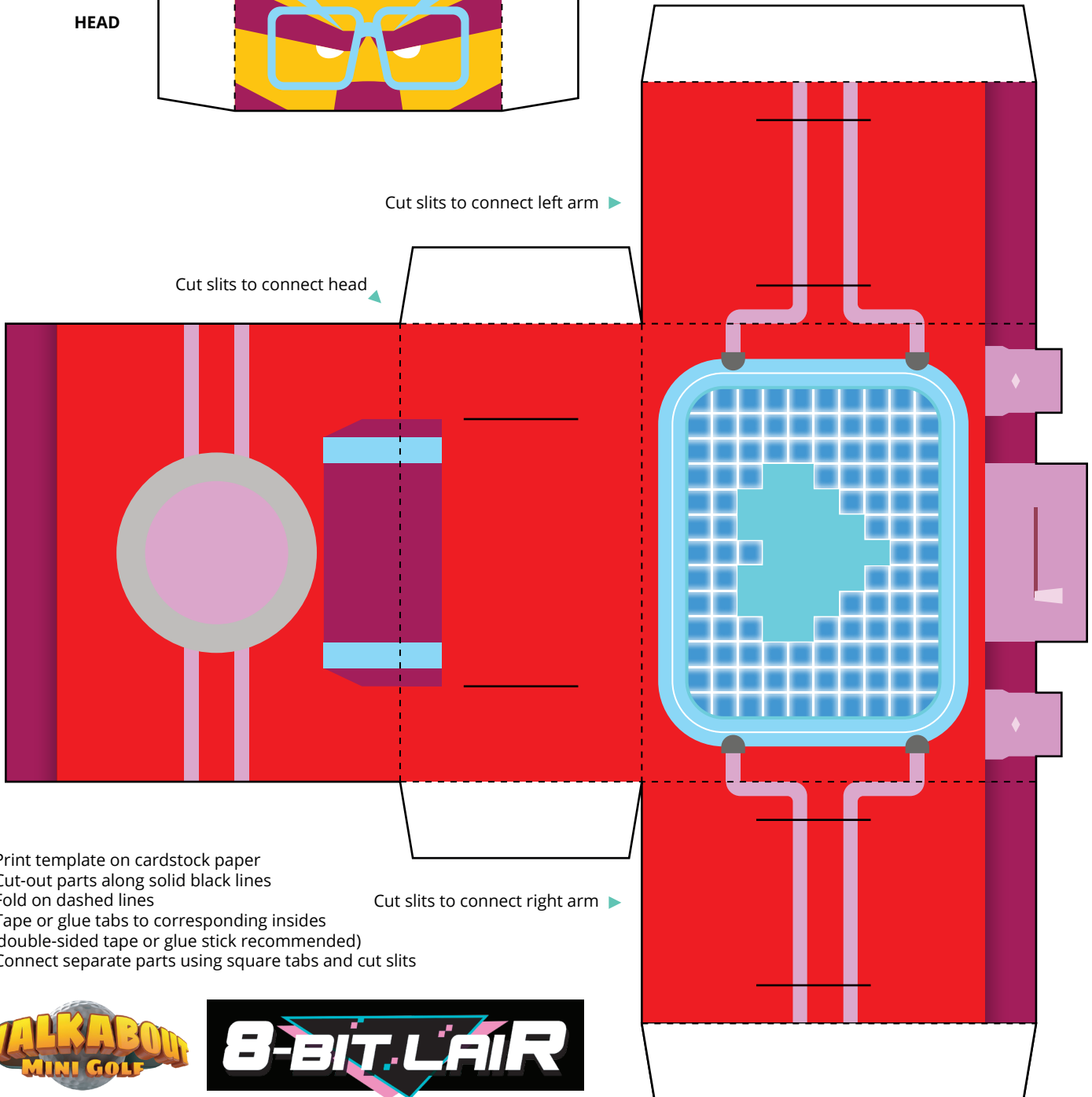


HEAD



This is what your assembled
VINCENT VECTOR
Paper Foldable will look like!



Cut slits to connect left arm ▶

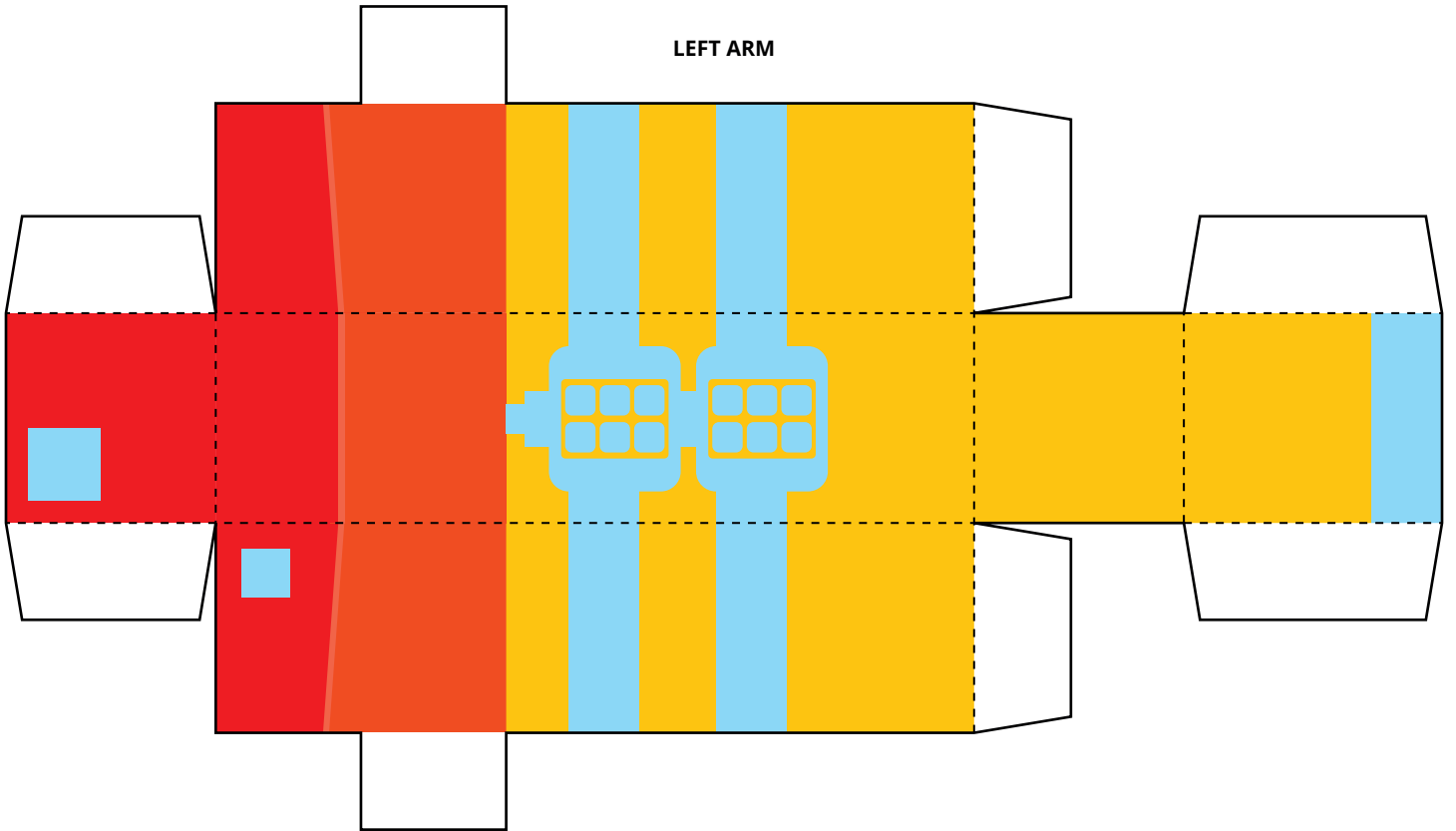
Cut slits to connect head ▶

Cut slits to connect right arm ▶

- Print template on cardstock paper
- Cut-out parts along solid black lines
- Fold on dashed lines
- Tape or glue tabs to corresponding insides (double-sided tape or glue stick recommended)
- Connect separate parts using square tabs and cut slits



LEFT ARM



RIGHT ARM

